

DIGITAL MULTI METER

AUTO

DC

24.6

V

IEC61010 2000 counts /Autorange

TACK LIFE

DM02A

HOLD

FUNC

Ω NCV Hz μA mA A OFF

CE

AUTOPOWER OFF

A

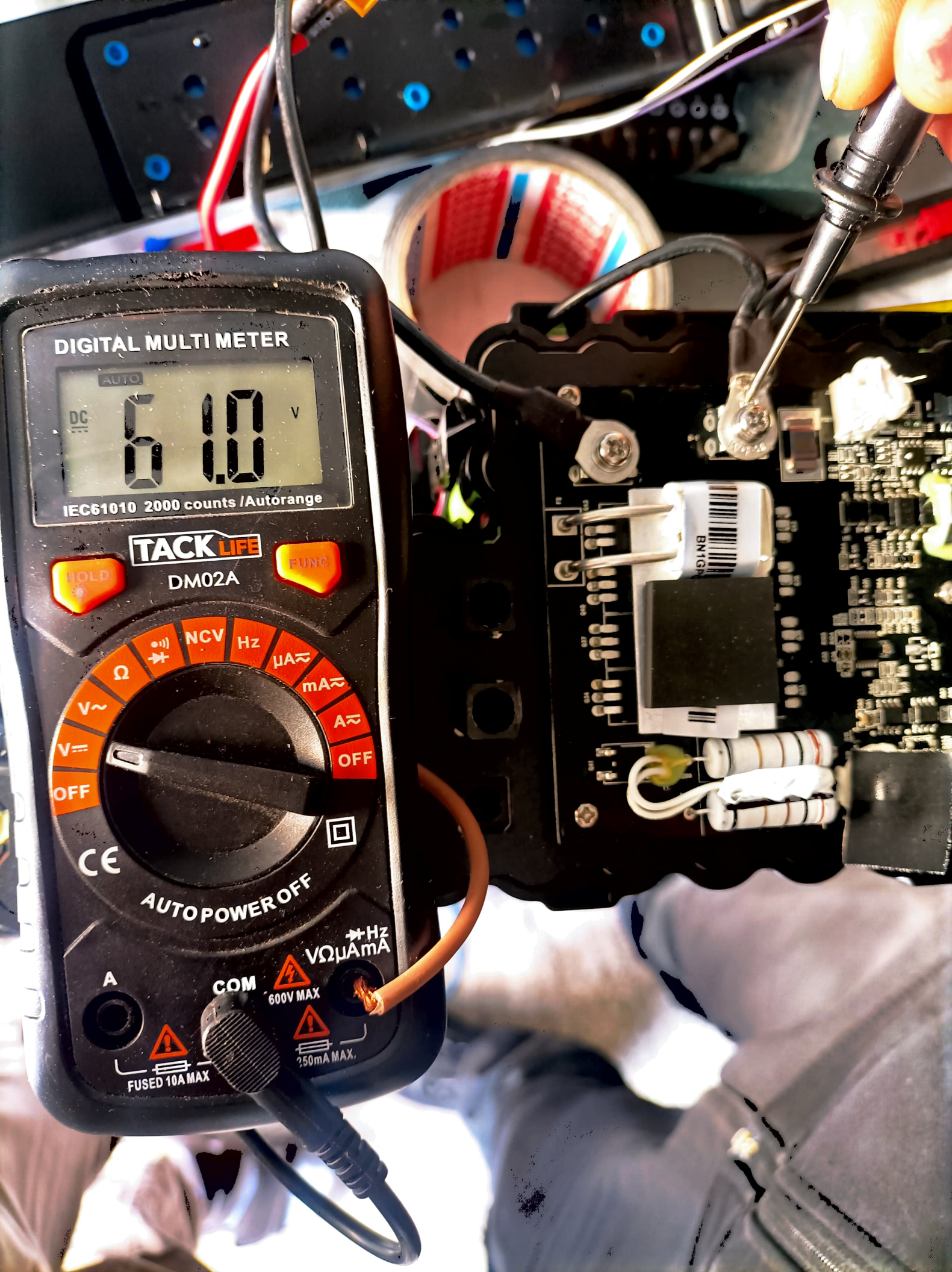
COM

600V MAX

VΩμA mA Hz

250mA MAX.

FUSED 10A MAX



DIGITAL MULTI METER

AUTO
DC
6.10 V

IEC61010 2000 counts /Autorange

TACK LIFE

DM02A

FUNC

HOLD

NCV Hz $\mu A \approx$ mA \approx A \approx OFF
 Ω \rightarrow $V \approx$ $V =$ OFF

CE

AUTO POWER OFF

A

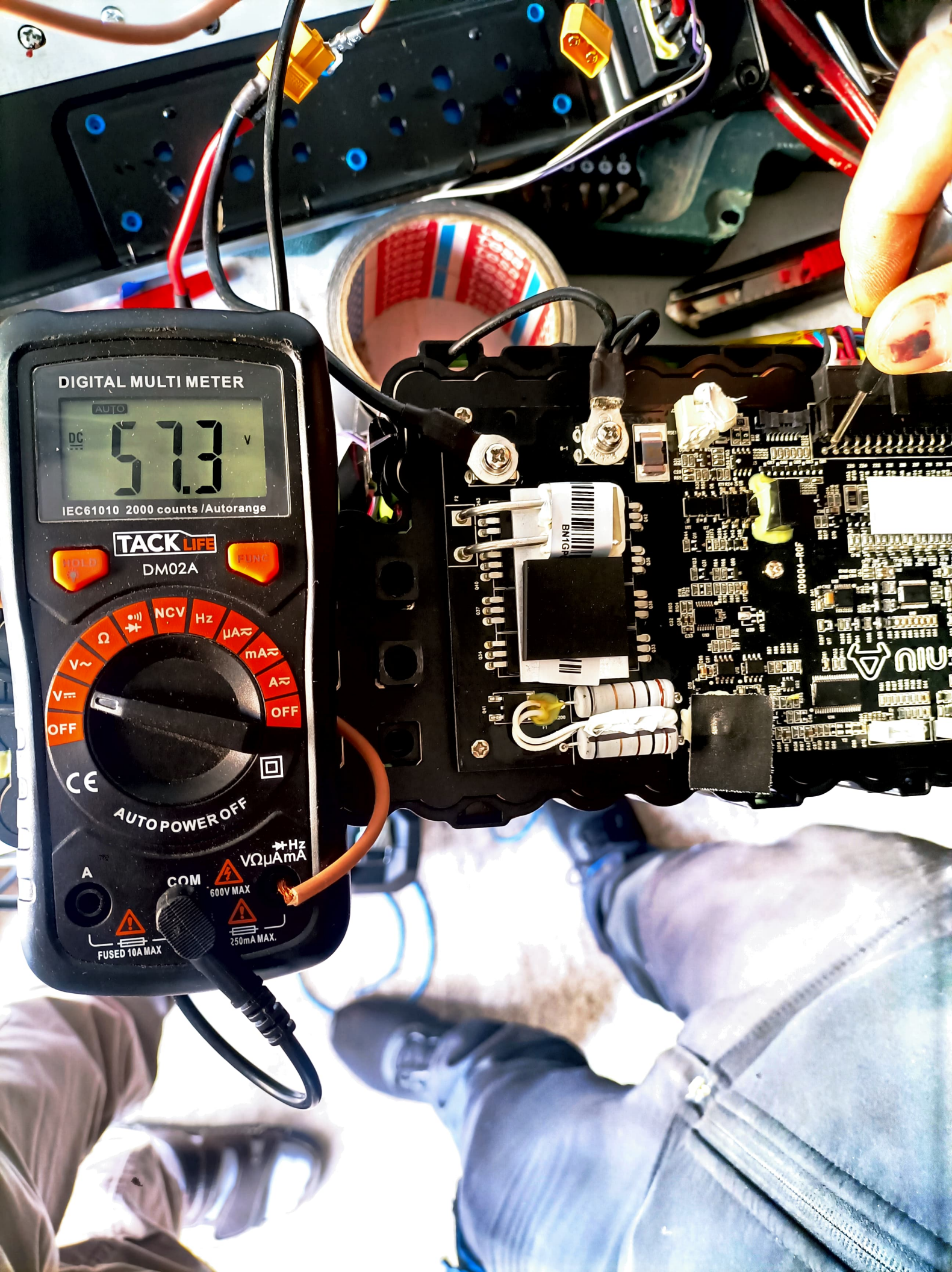
COM

600V MAX

\rightarrow Hz $V \Omega \mu A mA$

FUSED 10A MAX

250mA MAX.



DIGITAL MULTI METER

AUTO
DC 57.3 V

IEC61010 2000 counts /Autorange

TACK LIFE

DM02A

HOLD

FUNC

NCV Hz μ A mA A OFF
V \sim V \equiv OFF

CE

AUTO POWER OFF

A

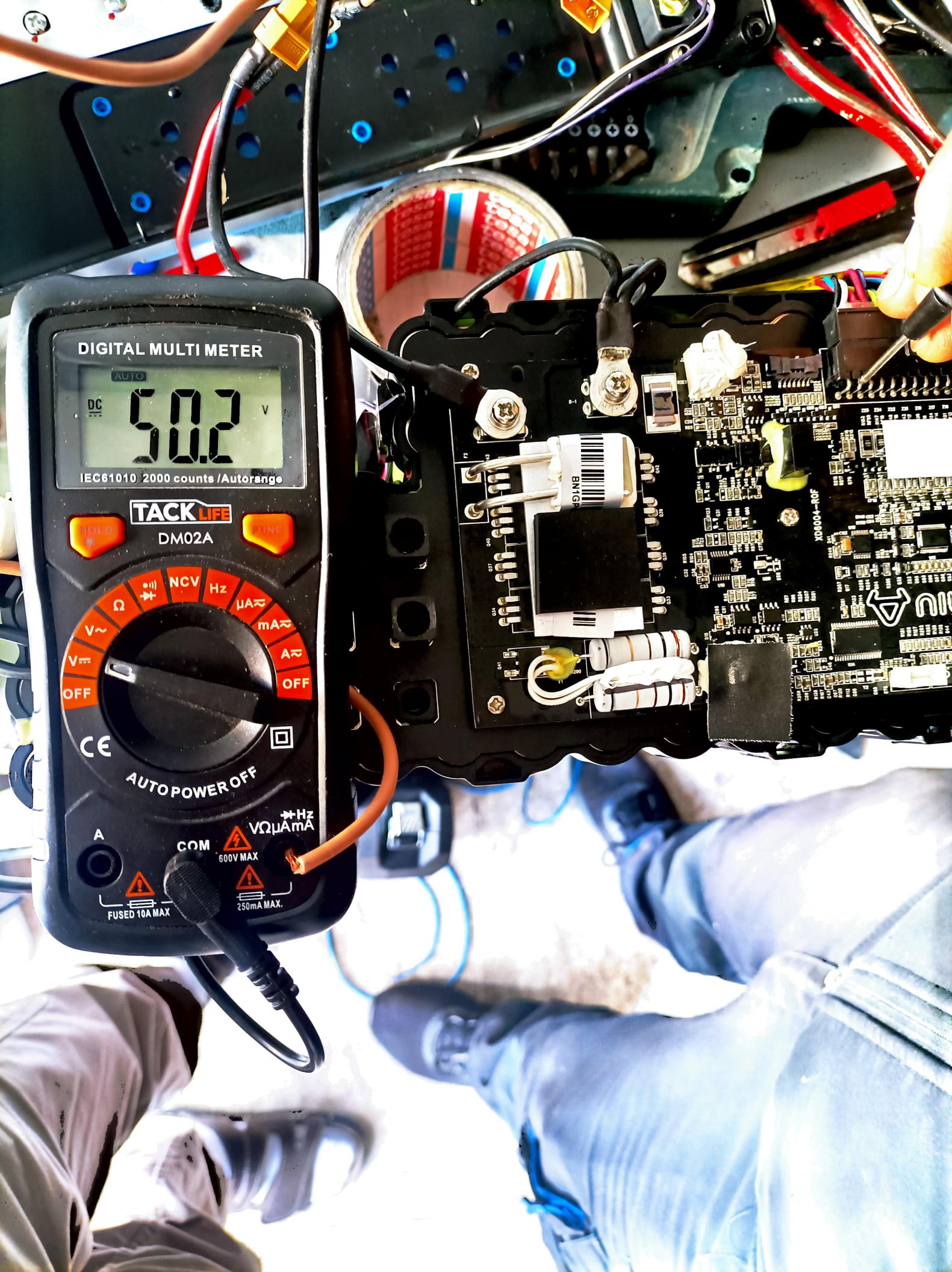
COM

600V MAX

250mA MAX.

FUSED 10A MAX

Hz V Ω μ A mA



DIGITAL MULTI METER

AUTO
DC **50.2** V
IEC61010 2000 counts /Autorange

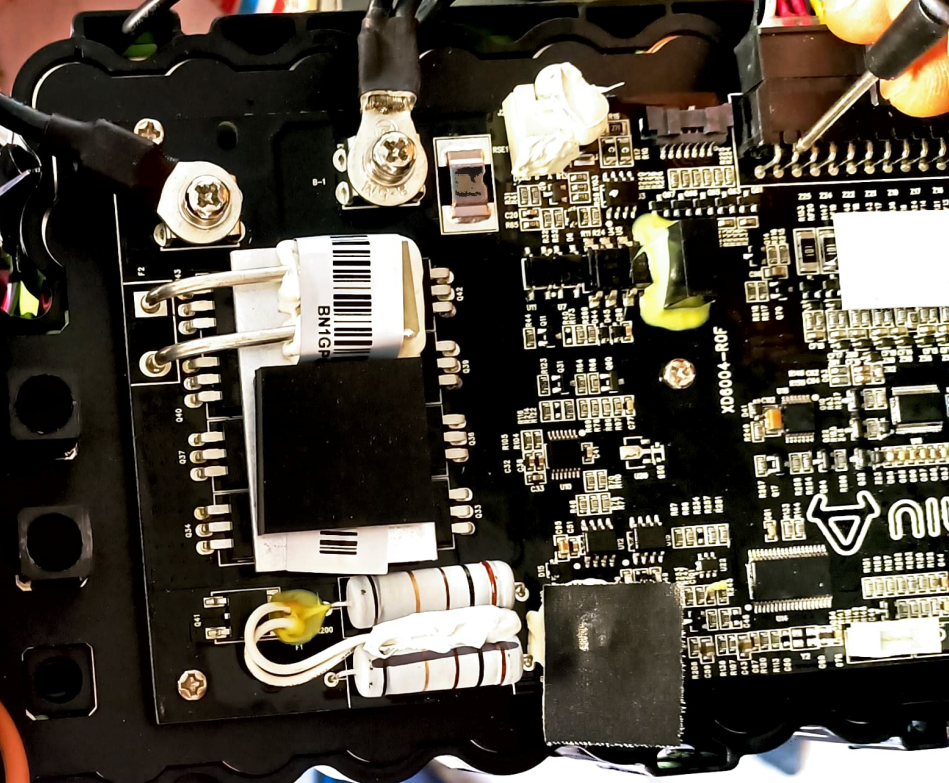
TACK LIFE

DM02A

OFF V_~ Ω NCV Hz μA mA A OFF

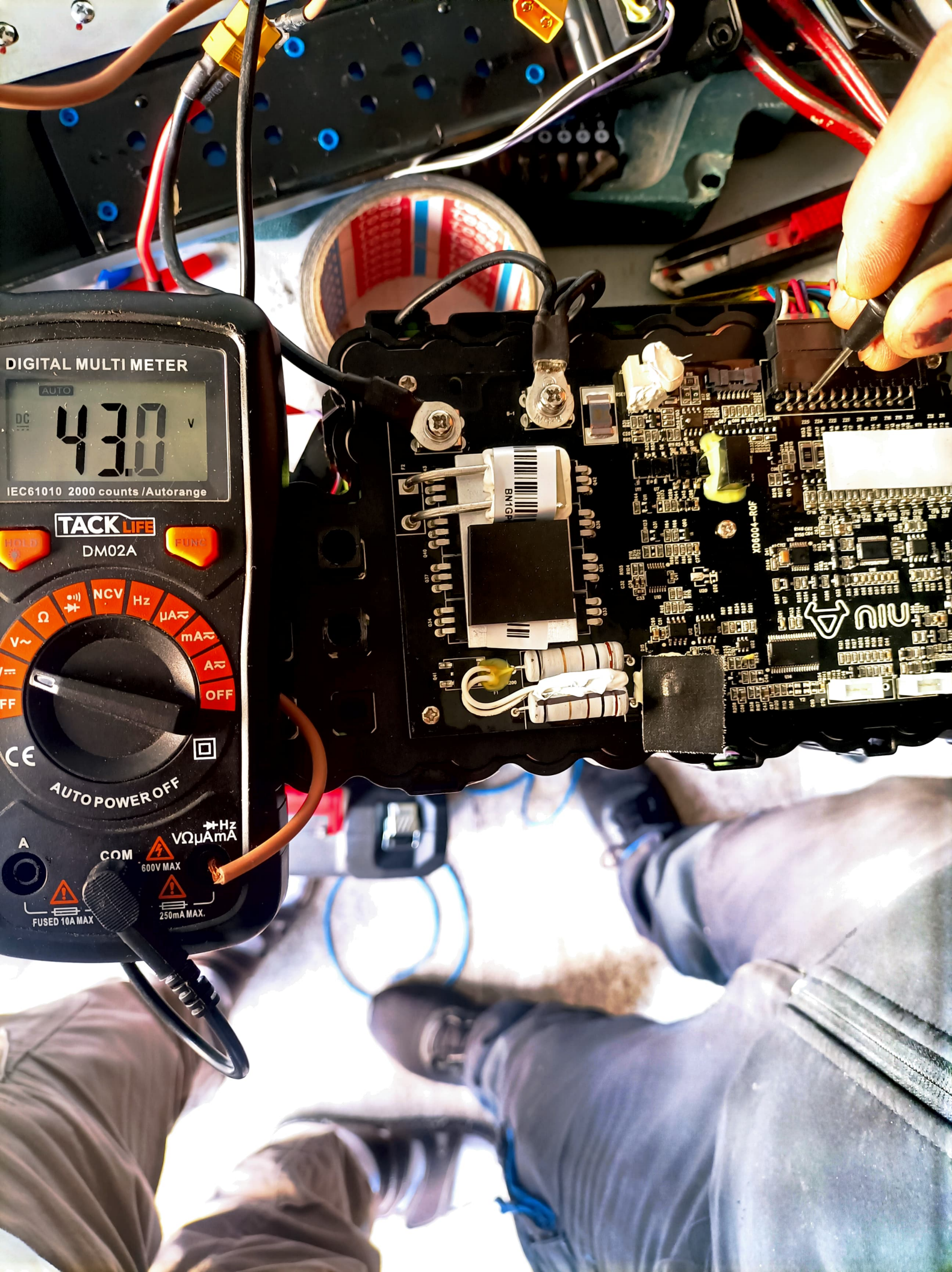
AUTOPOWER OFF

A COM 600V MAX 250mA MAX. VΩμA mA Hz



BN1G

XD9004-ROF



DIGITAL MULTI METER

AUTO
DC
43.0 V

IEC61010 2000 counts /Autorange

TACK LIFE

DM02A

Ω NCV Hz
V~ mA~ A~
OFF

CE AUTOPOWER OFF

A COM Hz
600V MAX VΩμmA
FUSED 10A MAX 250mA MAX.

DIGITAL MULTI METER

AUTO
35.0 V

C61010 2000 counts /Autorange

TACK LIFE

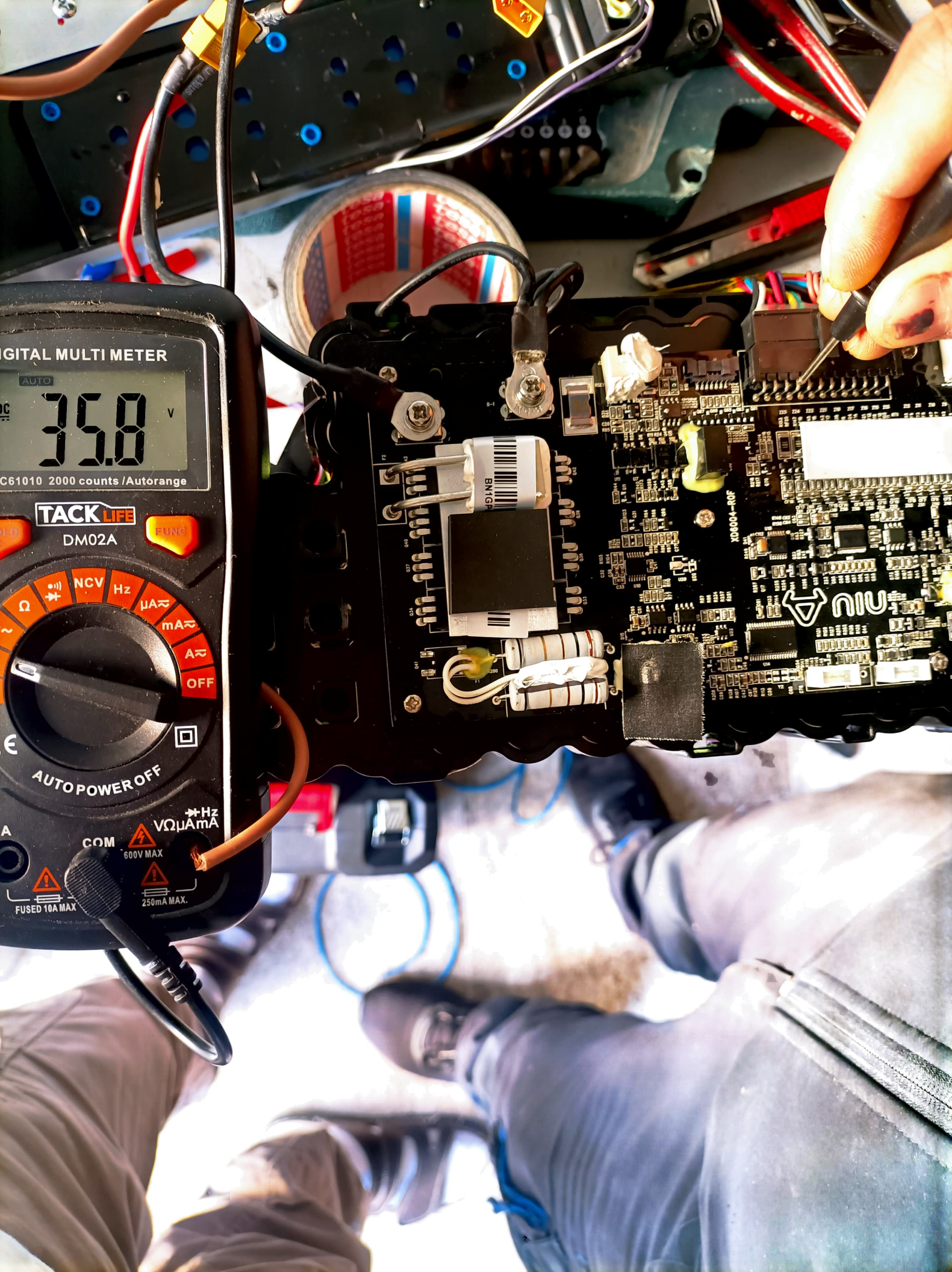
DM02A

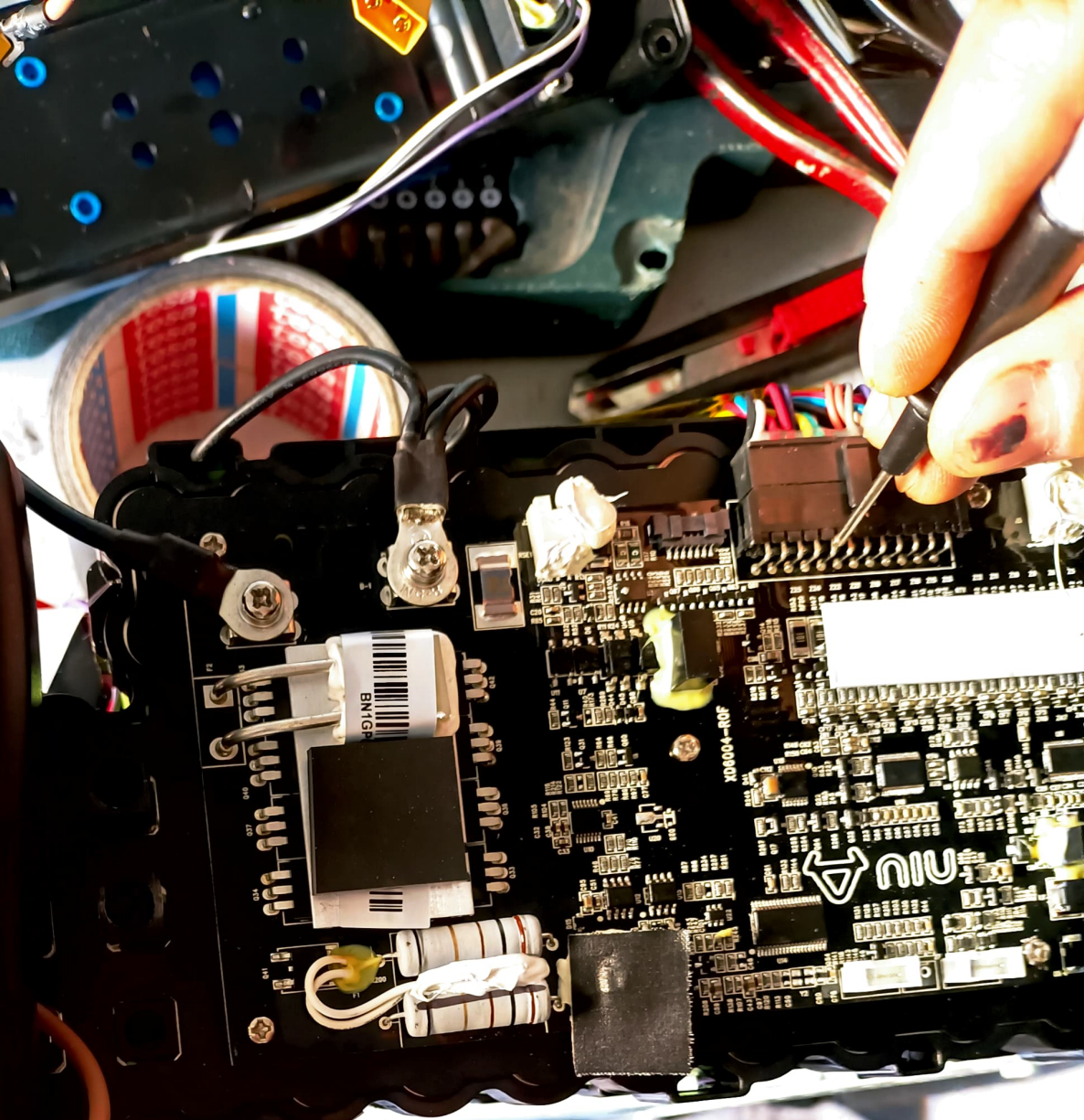
FUNC

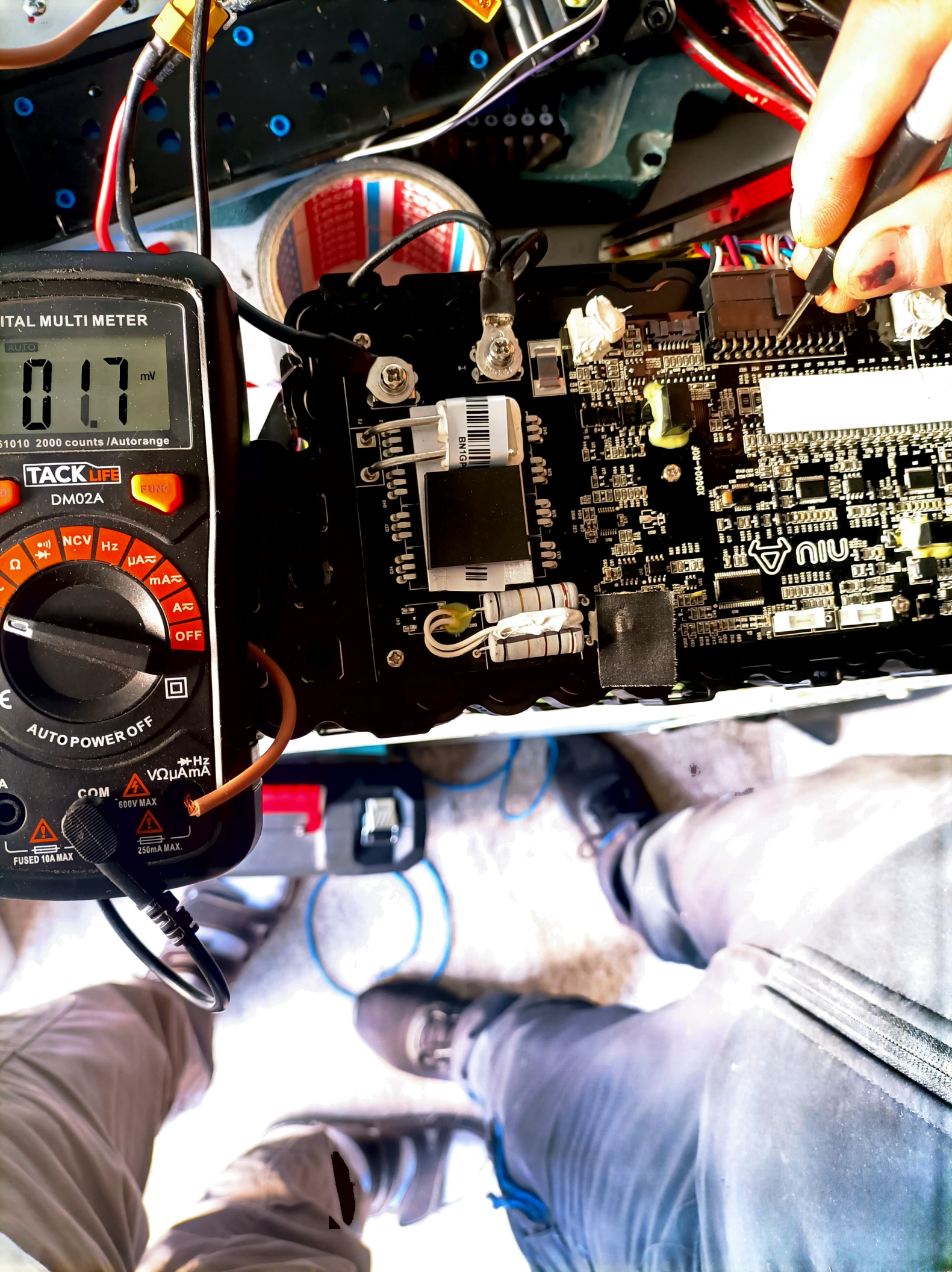
Ω NCV Hz μA mA A OFF

AUTOPOWER OFF

COM Hz VΩμA mA
600V MAX
250mA MAX.
FUSED 10A MAX







DIGITAL MULTI METER

AUTO
0.17 mV

2010 2000 counts /Autorange

TACKLIFE

DM02A

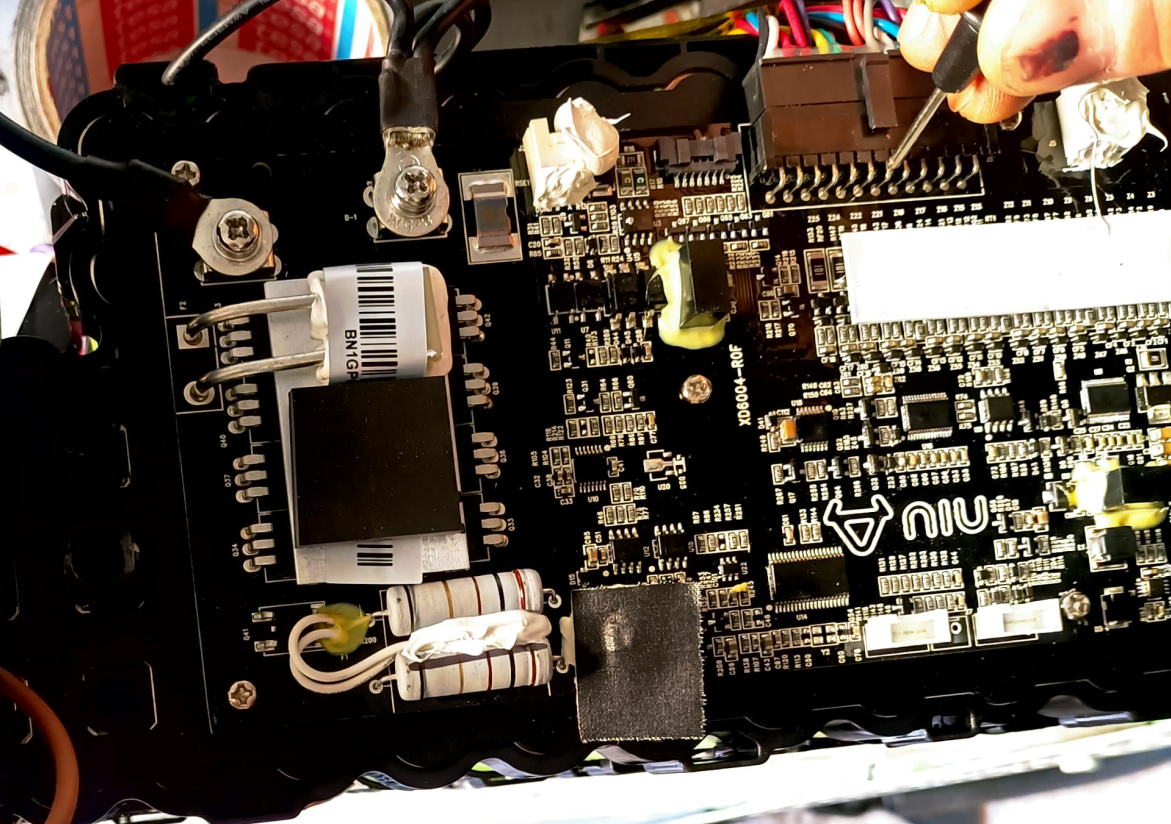
FUNC

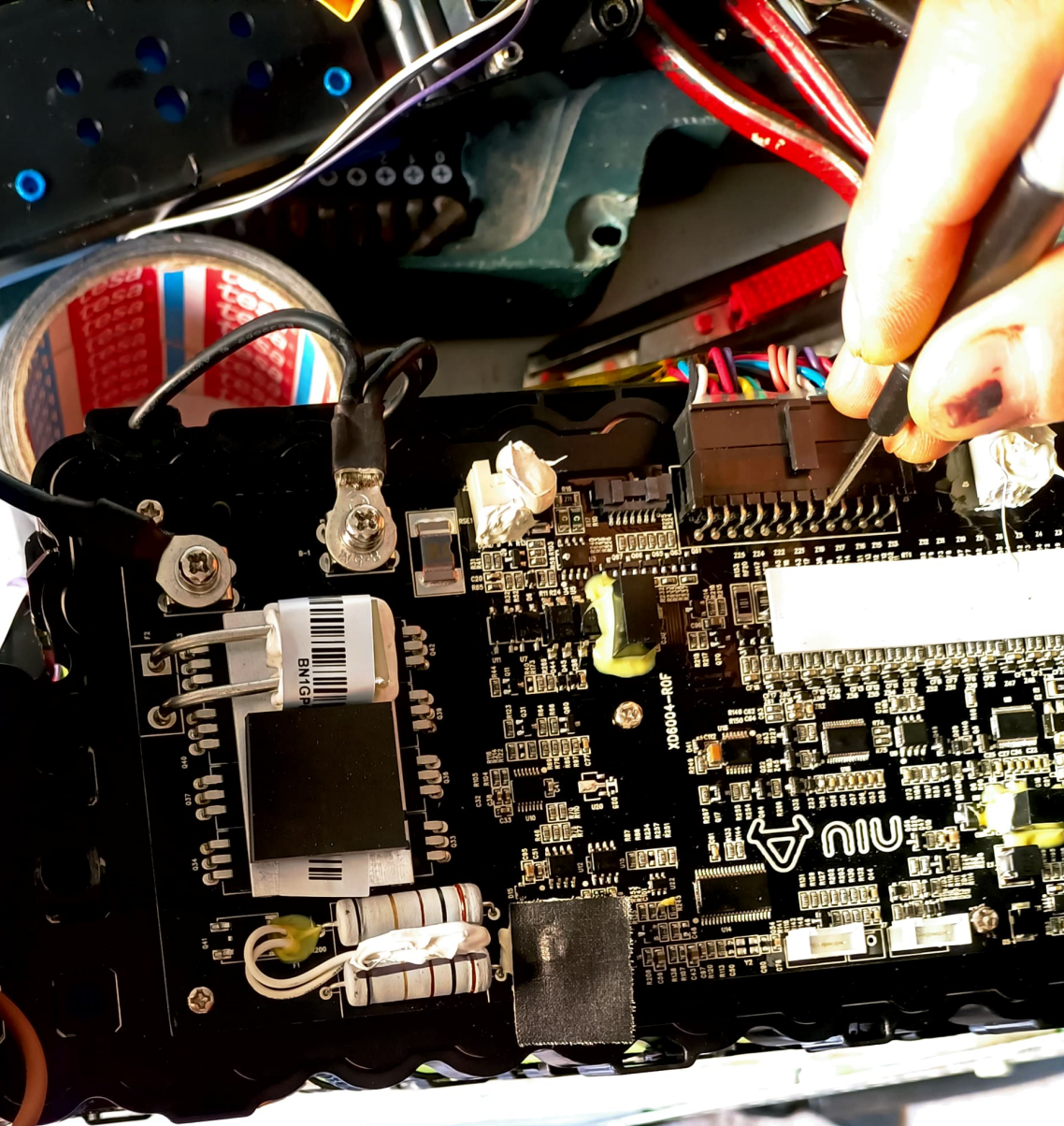
NCV Hz μA mA A OFF

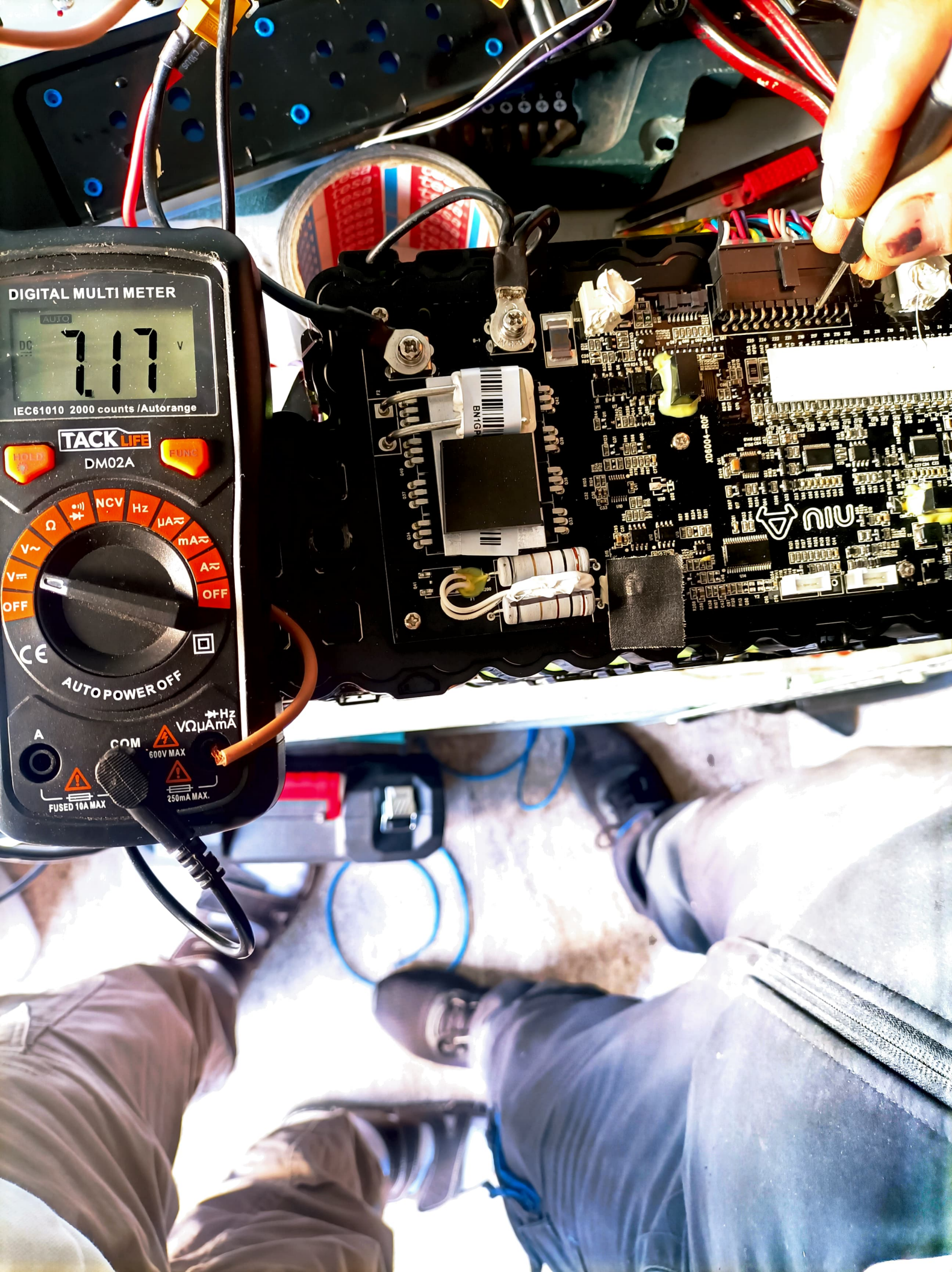
AUTOPOWER OFF

COM 600V MAX 250mA MAX

FUSED 10A MAX







DIGITAL MULTI METER

AUTO
DC 7.17 V

IEC61010 2000 counts /Autorange

TACK LIFE

DM02A

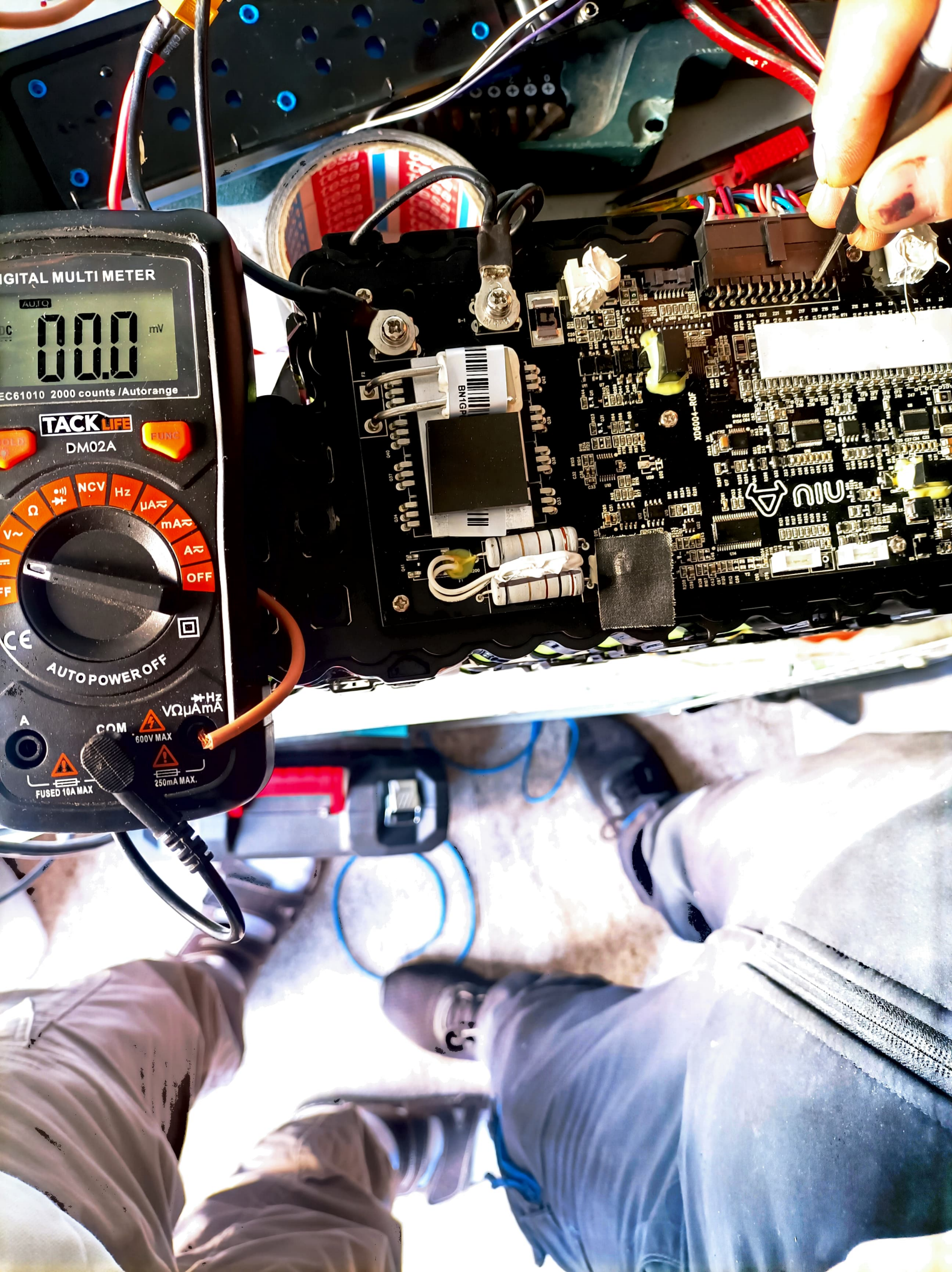
NCV Hz $\mu A \approx$ mA \approx A \approx OFF

OFF V \approx V \approx OFF

CE AUTOPOWER OFF

A COM 600V MAX 250mA MAX.

FUSED 10A MAX.



DIGITAL MULTI METER

000 mV

EC61010 2000 counts /Autorange

TACK LIFE

DM02A

OFF A mA μ A Hz NCV Ω V

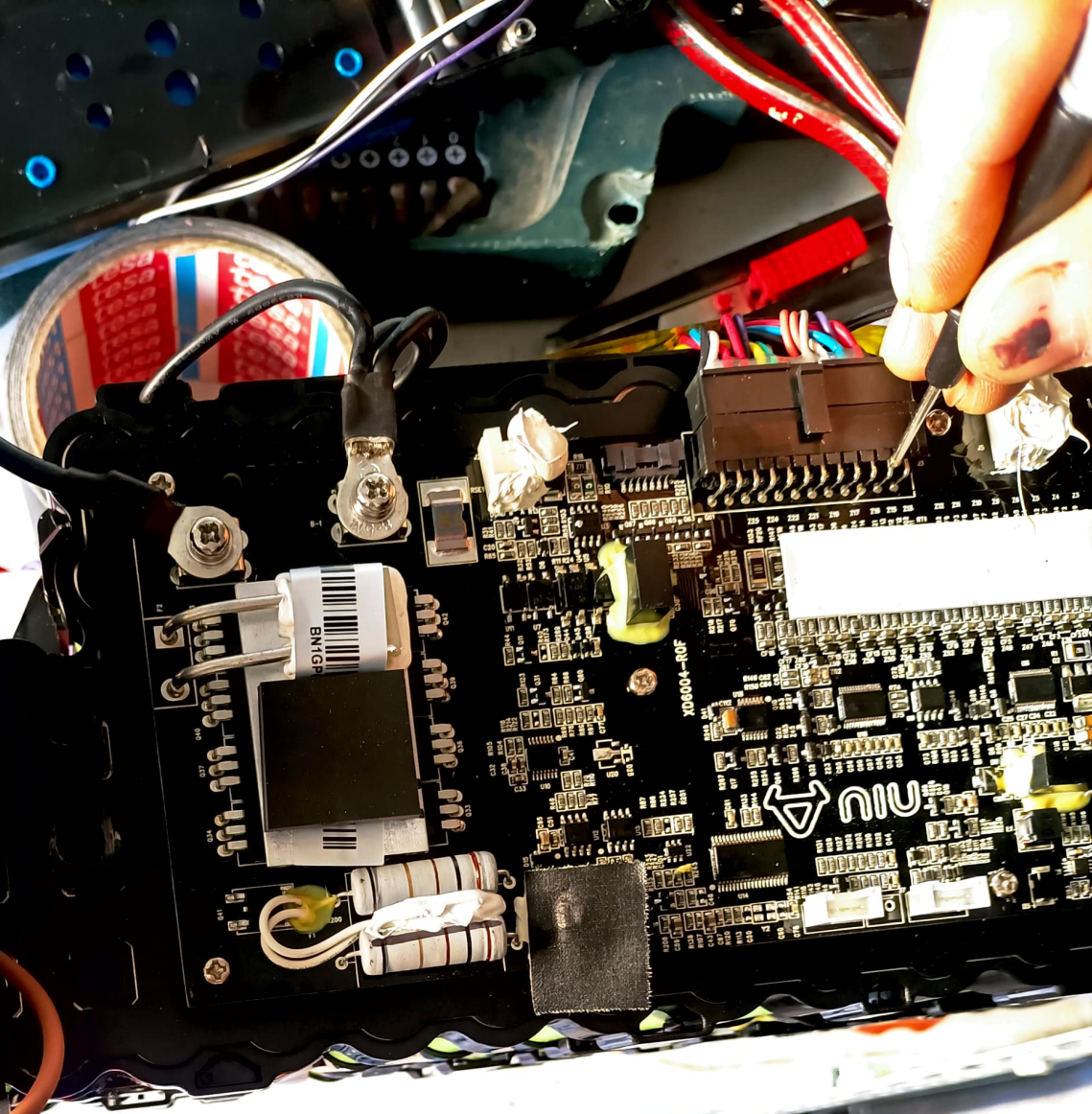
AUTOPOWER OFF

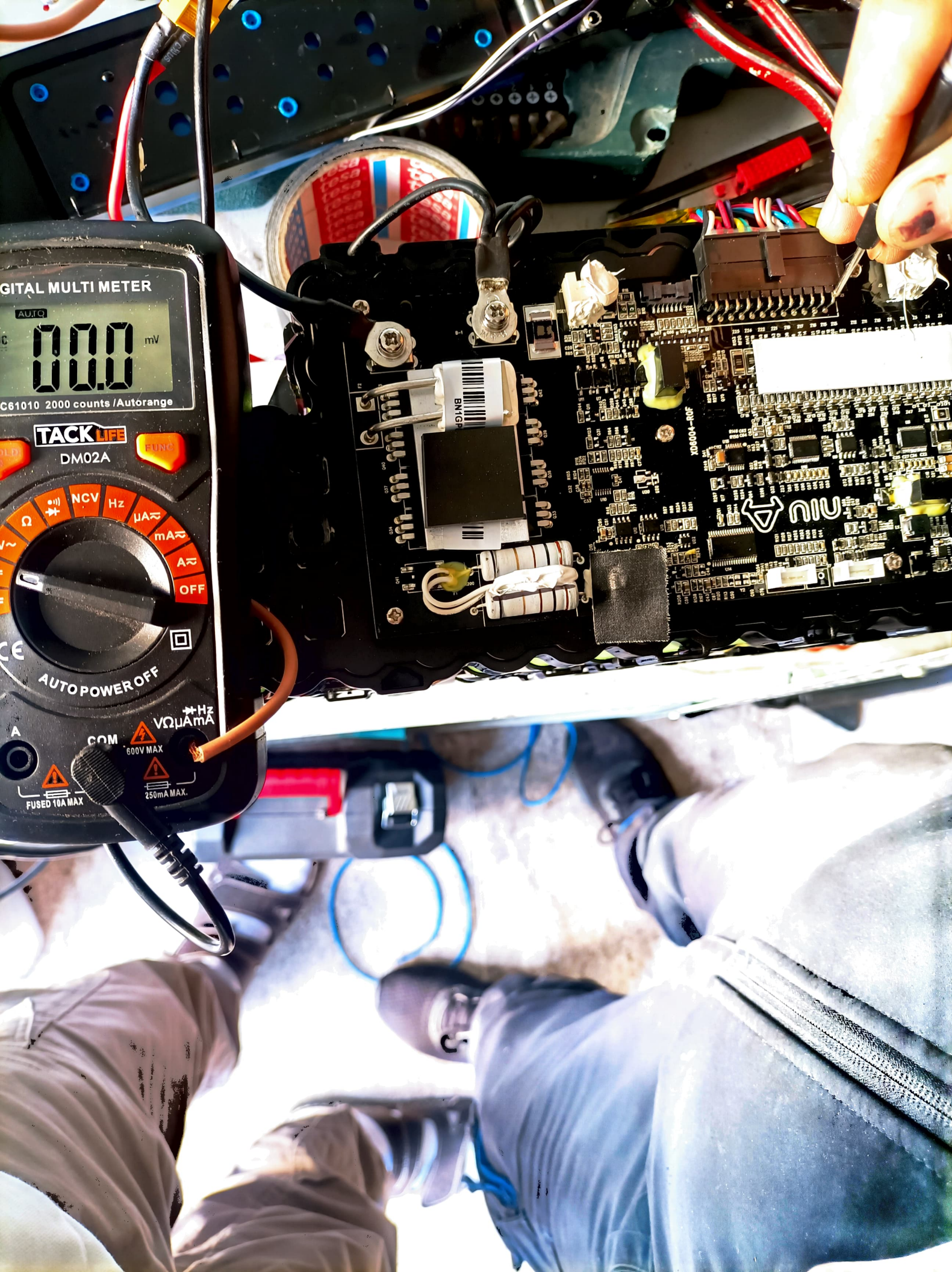
COM 600V MAX 250mA MAX. FUSED 10A MAX.

BM1G

X08004-R0F

nu





DIGITAL MULTI METER

AUTO
000.0 mV

C61010 2000 counts /Autorange

TACKLIFE

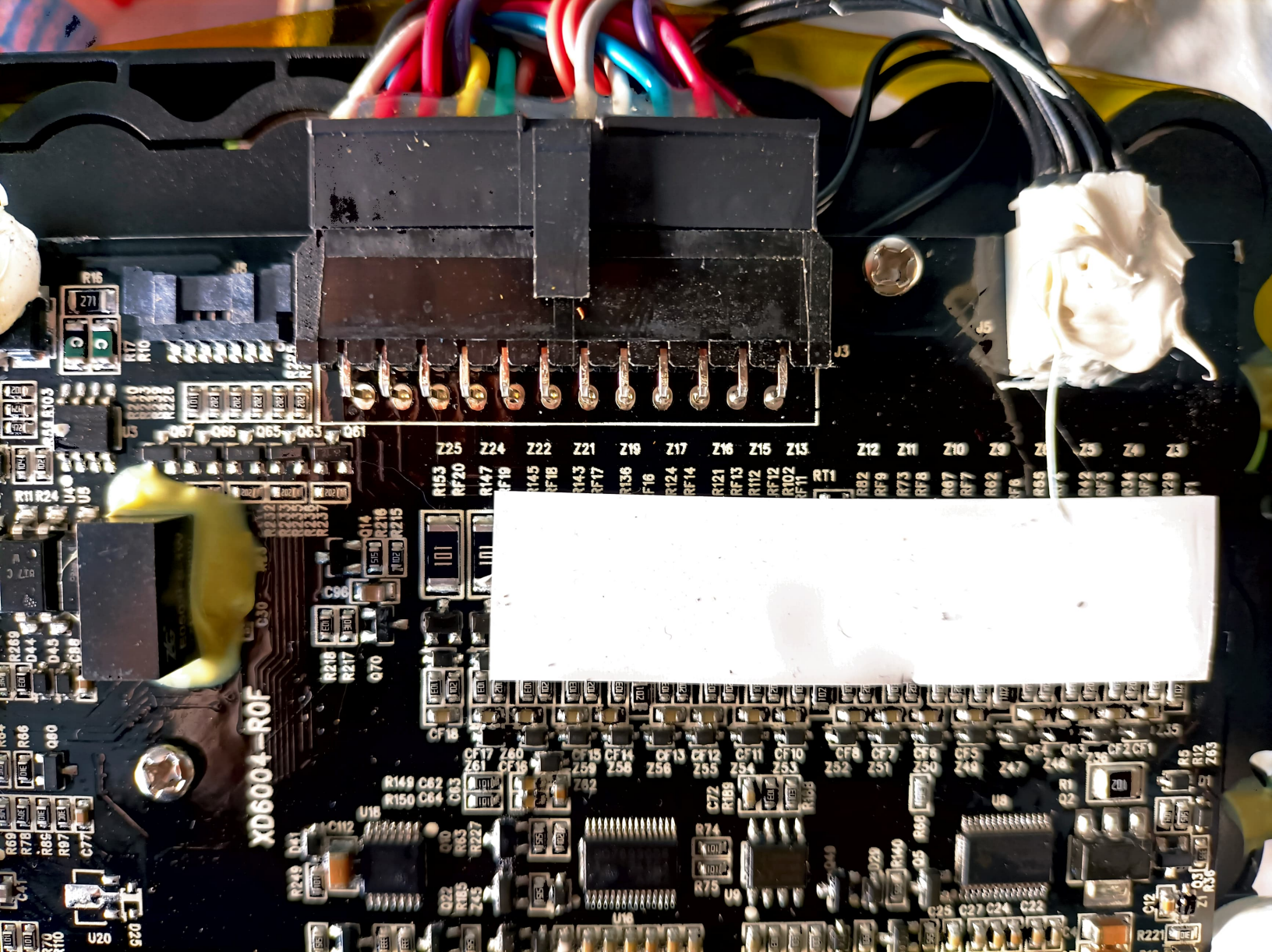
DM02A

FUNC

Ω
Hz
μA
mA
A
OFF

AUTO POWER OFF

COM 600V MAX
FUSED 10A MAX
VΩμA mA Hz



XD6004-ROF

J3

R153 RF20 R147 RF19 R145 RF18 R143 RF17 R136 RF16 R124 RF14 R121 RF13 R112 RF12 R102 RF11 R11 R82 RF9 R73 RF8 R67 RF7 R62 RF6 R55 R41 R42 RF3 R34 RF2 R29 RF1 Z25 Z24 Z22 Z21 Z18 Z17 Z16 Z15 Z12 Z11 Z10 Z9 Z8 Z7 Z6 Z5

CF18 CF17 Z60 Z61 CF16 CF15 CF14 CF13 CF12 CF11 CF10 CF8 CF7 Z52 Z51 Z50 CF5 Z49 Z48 Z47 Z46 Z45 CF2 CF1 R5 R4 R3 R2 R1 R0 R221 R220 R219 R218 R217 R216 R215 R214 R213 R212 R211 R210 R209 R208 R207 R206 R205 R204 R203 R202 R201 R200 R199 R198 R197 R196 R195 R194 R193 R192 R191 R190 R189 R188 R187 R186 R185 R184 R183 R182 R181 R180 R179 R178 R177 R176 R175 R174 R173 R172 R171 R170 R169 R168 R167 R166 R165 R164 R163 R162 R161 R160 R159 R158 R157 R156 R155 R154 R153 R152 R151 R150 R149 R148 R147 R146 R145 R144 R143 R142 R141 R140 R139 R138 R137 R136 R135 R134 R133 R132 R131 R130 R129 R128 R127 R126 R125 R124 R123 R122 R121 R120 R119 R118 R117 R116 R115 R114 R113 R112 R111 R110 R109 R108 R107 R106 R105 R104 R103 R102 R101 R100 R99 R98 R97 R96 R95 R94 R93 R92 R91 R90 R89 R88 R87 R86 R85 R84 R83 R82 R81 R80 R79 R78 R77 R76 R75 R74 R73 R72 R71 R70 R69 R68 R67 R66 R65 R64 R63 R62 R61 R60 R59 R58 R57 R56 R55 R54 R53 R52 R51 R50 R49 R48 R47 R46 R45 R44 R43 R42 R41 R40 R39 R38 R37 R36 R35 R34 R33 R32 R31 R30 R29 R28 R27 R26 R25 R24 R23 R22 R21 R20 R19 R18 R17 R16 R15 R14 R13 R12 R11 R10 R9 R8 R7 R6 R5 R4 R3 R2 R1 R0

R16 271 R17 R10 R104 R103 R102 R101 R100 R99 R98 R97 R96 R95 R94 R93 R92 R91 R90 R89 R88 R87 R86 R85 R84 R83 R82 R81 R80 R79 R78 R77 R76 R75 R74 R73 R72 R71 R70 R69 R68 R67 R66 R65 R64 R63 R62 R61 R60 R59 R58 R57 R56 R55 R54 R53 R52 R51 R50 R49 R48 R47 R46 R45 R44 R43 R42 R41 R40 R39 R38 R37 R36 R35 R34 R33 R32 R31 R30 R29 R28 R27 R26 R25 R24 R23 R22 R21 R20 R19 R18 R17 R16 R15 R14 R13 R12 R11 R10 R9 R8 R7 R6 R5 R4 R3 R2 R1 R0

067 066 065 063 061

C90 Q14 R218 R217 Q70 R216 R215

R149 C62 C03 R150 C64 C03

R74 R75

R221 R220 R219 R218 R217 R216 R215 R214 R213 R212 R211 R210 R209 R208 R207 R206 R205 R204 R203 R202 R201 R200 R199 R198 R197 R196 R195 R194 R193 R192 R191 R190 R189 R188 R187 R186 R185 R184 R183 R182 R181 R180 R179 R178 R177 R176 R175 R174 R173 R172 R171 R170 R169 R168 R167 R166 R165 R164 R163 R162 R161 R160 R159 R158 R157 R156 R155 R154 R153 R152 R151 R150 R149 R148 R147 R146 R145 R144 R143 R142 R141 R140 R139 R138 R137 R136 R135 R134 R133 R132 R131 R130 R129 R128 R127 R126 R125 R124 R123 R122 R121 R120 R119 R118 R117 R116 R115 R114 R113 R112 R111 R110 R109 R108 R107 R106 R105 R104 R103 R102 R101 R100 R99 R98 R97 R96 R95 R94 R93 R92 R91 R90 R89 R88 R87 R86 R85 R84 R83 R82 R81 R80 R79 R78 R77 R76 R75 R74 R73 R72 R71 R70 R69 R68 R67 R66 R65 R64 R63 R62 R61 R60 R59 R58 R57 R56 R55 R54 R53 R52 R51 R50 R49 R48 R47 R46 R45 R44 R43 R42 R41 R40 R39 R38 R37 R36 R35 R34 R33 R32 R31 R30 R29 R28 R27 R26 R25 R24 R23 R22 R21 R20 R19 R18 R17 R16 R15 R14 R13 R12 R11 R10 R9 R8 R7 R6 R5 R4 R3 R2 R1 R0

Q30

U20 U25

R221 R220 R219 R218 R217 R216 R215 R214 R213 R212 R211 R210 R209 R208 R207 R206 R205 R204 R203 R202 R201 R200 R199 R198 R197 R196 R195 R194 R193 R192 R191 R190 R189 R188 R187 R186 R185 R184 R183 R182 R181 R180 R179 R178 R177 R176 R175 R174 R173 R172 R171 R170 R169 R168 R167 R166 R165 R164 R163 R162 R161 R160 R159 R158 R157 R156 R155 R154 R153 R152 R151 R150 R149 R148 R147 R146 R145 R144 R143 R142 R141 R140 R139 R138 R137 R136 R135 R134 R133 R132 R131 R130 R129 R128 R127 R126 R125 R124 R123 R122 R121 R120 R119 R118 R117 R116 R115 R114 R113 R112 R111 R110 R109 R108 R107 R106 R105 R104 R103 R102 R101 R100 R99 R98 R97 R96 R95 R94 R93 R92 R91 R90 R89 R88 R87 R86 R85 R84 R83 R82 R81 R80 R79 R78 R77 R76 R75 R74 R73 R72 R71 R70 R69 R68 R67 R66 R65 R64 R63 R62 R61 R60 R59 R58 R57 R56 R55 R54 R53 R52 R51 R50 R49 R48 R47 R46 R45 R44 R43 R42 R41 R40 R39 R38 R37 R36 R35 R34 R33 R32 R31 R30 R29 R28 R27 R26 R25 R24 R23 R22 R21 R20 R19 R18 R17 R16 R15 R14 R13 R12 R11 R10 R9 R8 R7 R6 R5 R4 R3 R2 R1 R0