

# Ultra Bee Battery Check Method



## Contents

Battery Level Inspection-----	3
Checking Battery Fuse-----	4
Checking the 12V Normal Supply-----	5
Checking the Discharge Port Voltage-----	7
Checking the Charging Port Voltage-----	8
Checking Communication Port Resistance of Charging Port -----	9

# Battery Level Inspection



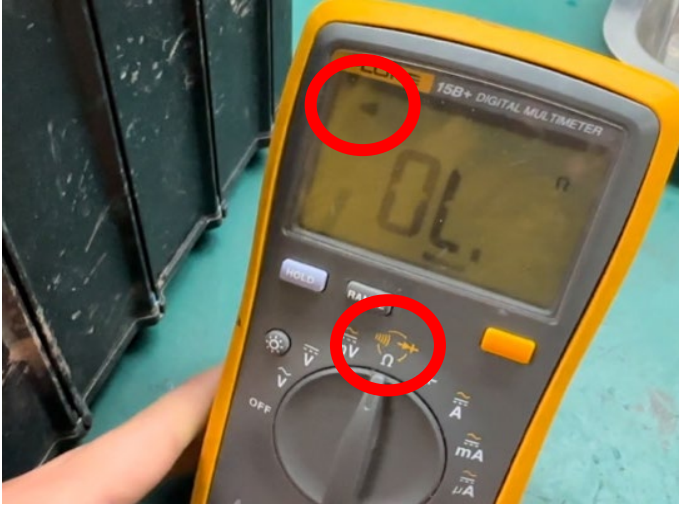
Observe whether there is still display of battery level.

If there is no display, try to use the charger to charge battery first.

If the charger cannot work, replace another charger to try to charge, to prevent charging failure caused by the charger.

# Checking Battery Fuse

1. Select continuity mode on multimeter



2. Find the battery fuse cover



3. Open the battery fuse over



4. Contact fixing bolts on both ends of the fuse with red and black probes

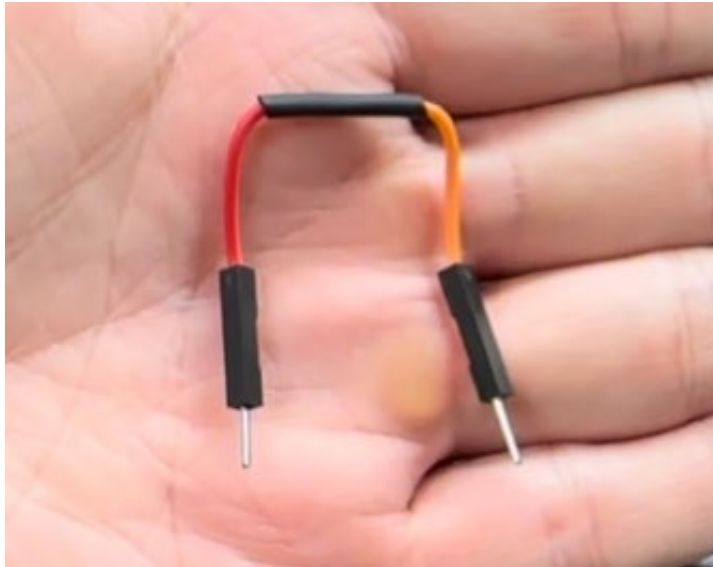


If the multimeter shows connected line (keeps beeping), the fuse is intact. If the result shows the line is disconnected, the battery is faulty.

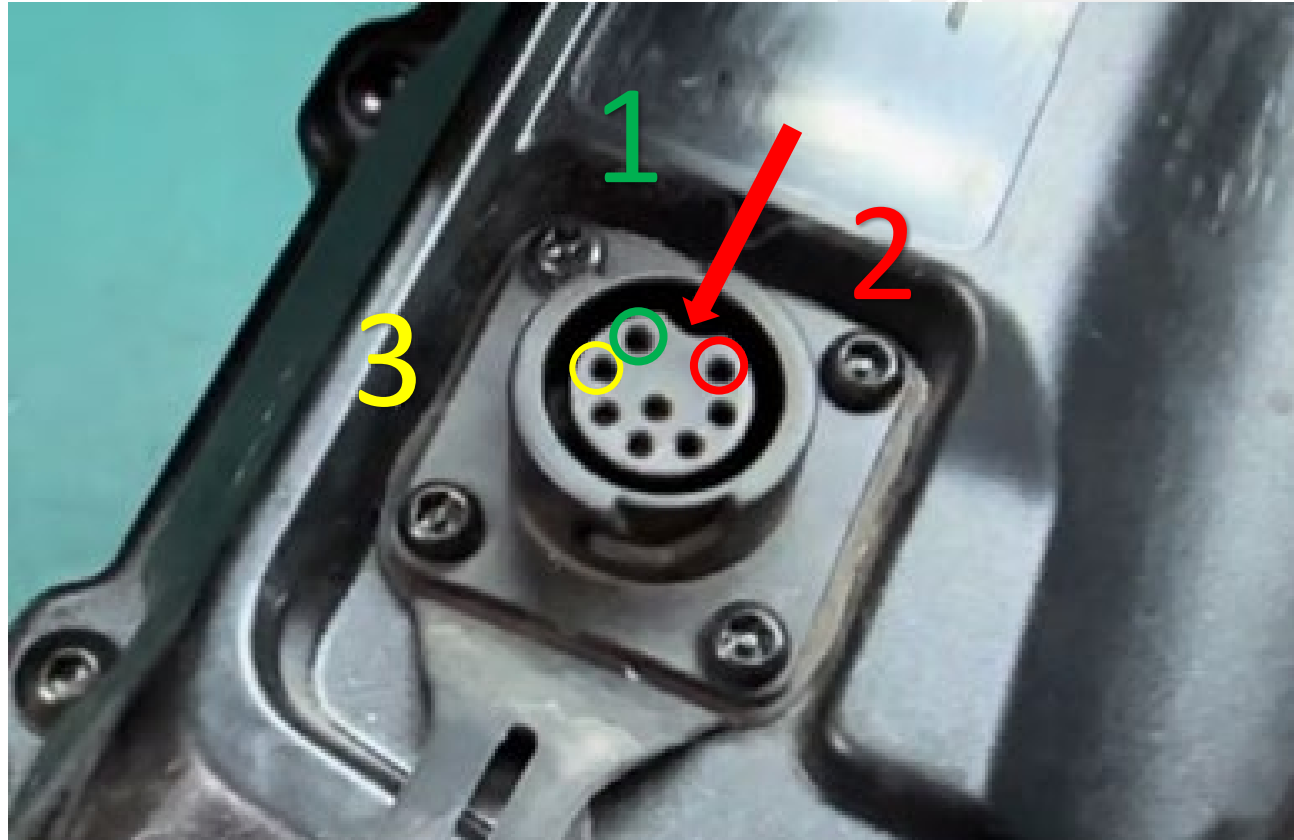
**Caution: Melted fuse indicates that the battery internal is seriously faulty. DO NOT replace the fuse.**

# Checking the 12V Normal Supply

1. Prepare a U shaped wire with thin terminals that is suitable to insert in the communication port.



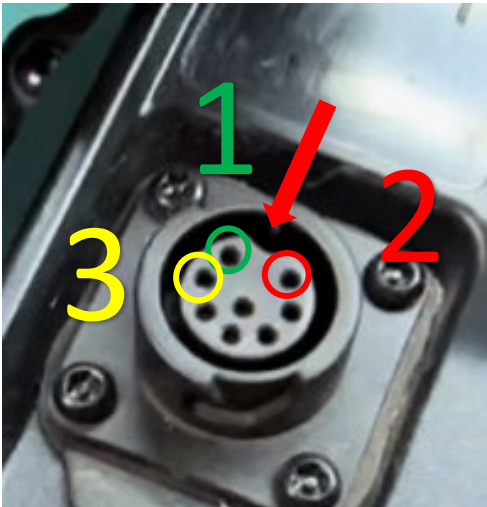
2. Find the communication port, note the port positioning notch indicated by the arrow in the figure. Locate the nearest pin hole 1 (green) and 2 (red).



# Checking the 12V Normal Supply

3. Insert both ends of the prepared wire into the two pin hole 1 and 2 respectively, and ensure that the wire ends contact the metal ends in the holes.

Note that the curved notch of the port is the reference for hole location.



4. Insert the multimeter black probe to pin hole 3 (yellow circle), and contact red probe to any conductive part on the wire. The voltage between hole 3 and wire should be about 12V.

**If no voltage, the battery is faulty.**



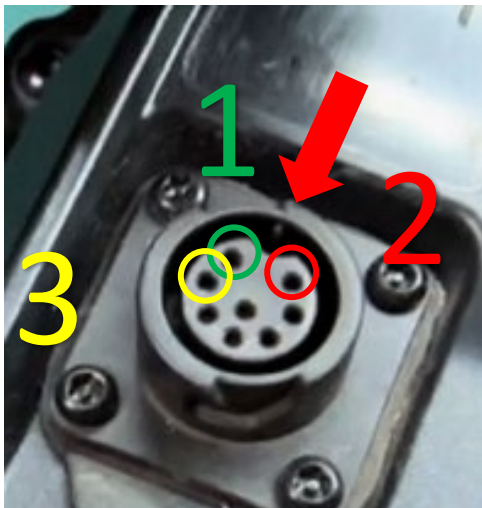
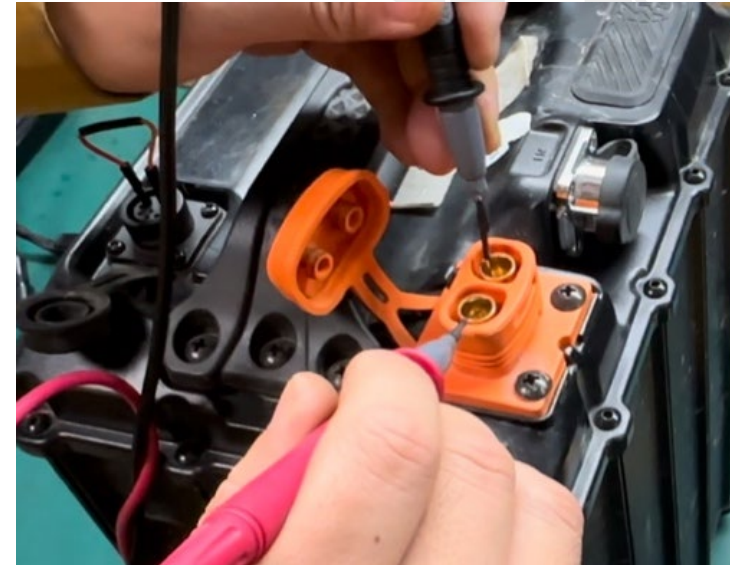
# Checking the Discharge Port Voltage

1. Keep the wire inserted in pin hole 1 and 2 of communication plug.



2. Contact red probe to the discharge port positive terminal and black probe to the negative terminal.

**Danger! DO NOT** let the 2 probes touch during measurement!



The measured result should be between 64-84V and the voltage should correspond to the displayed battery level.

- If no voltage, the battery is faulty.
- If the voltage is too low, you may charge the battery with charger, but if the battery can not be charged, the battery is faulty.

# Checking the Charging Port Voltage

Turn the multimeter dial to DC Voltage.

Insert red probe to the right jack of the charging port, and the black probe to the left jack. The voltage reading should be consistent with the discharge port voltage.

**Danger! DO NOT** let the 2 probes touch during measurement!

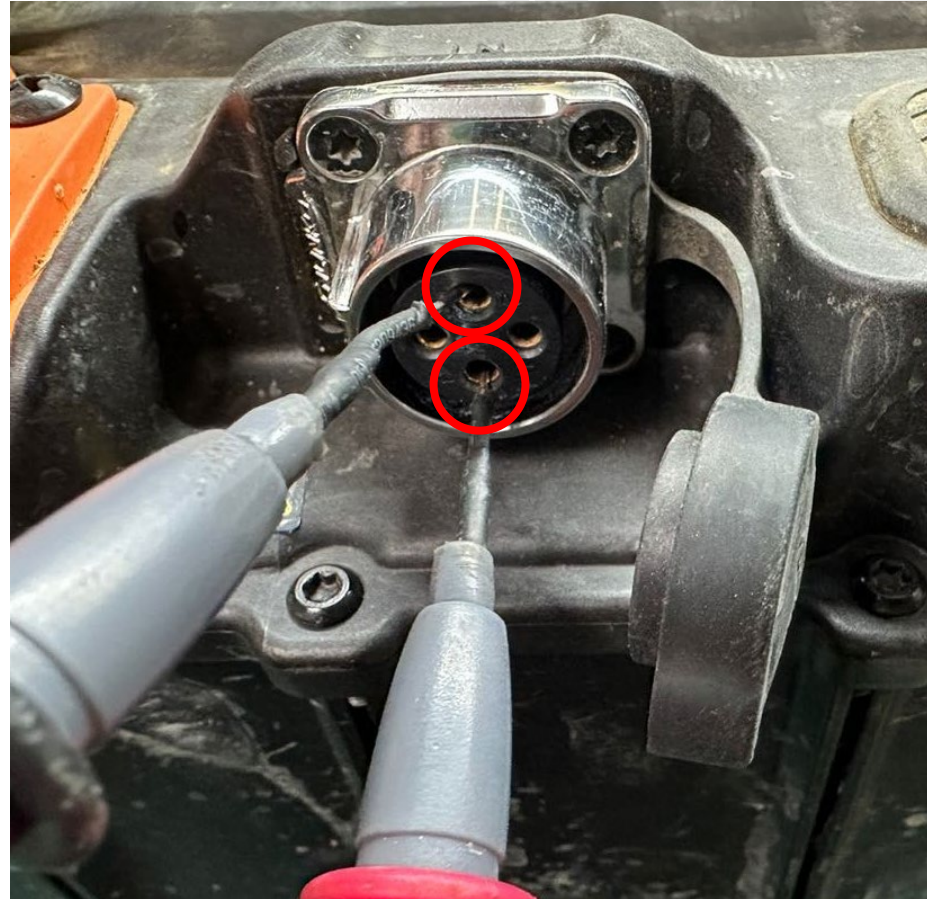


# Checking Communication Port Resistance of Charging Port

Turn the multimeter dial to resistance mode.



Measure the resistance value of the upper and lower jacks of the charging port. The normal value is  $120\pm 3\Omega$  (With battery disconnected from the bike).



THANKS !

